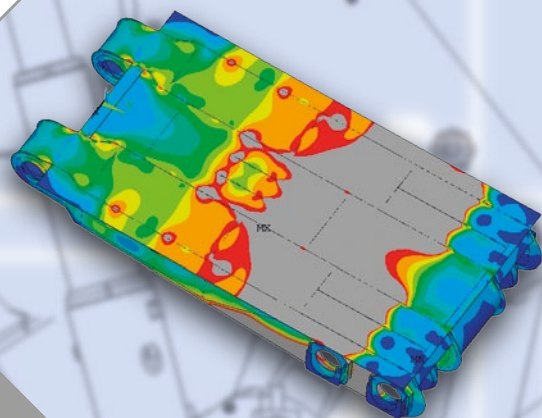
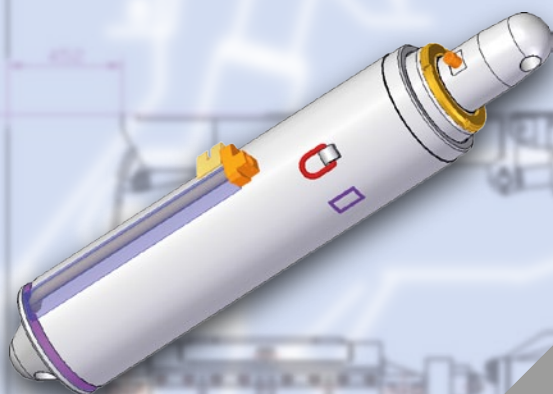


HYDROTECH

RELIABLE PARTNER FOR MINING

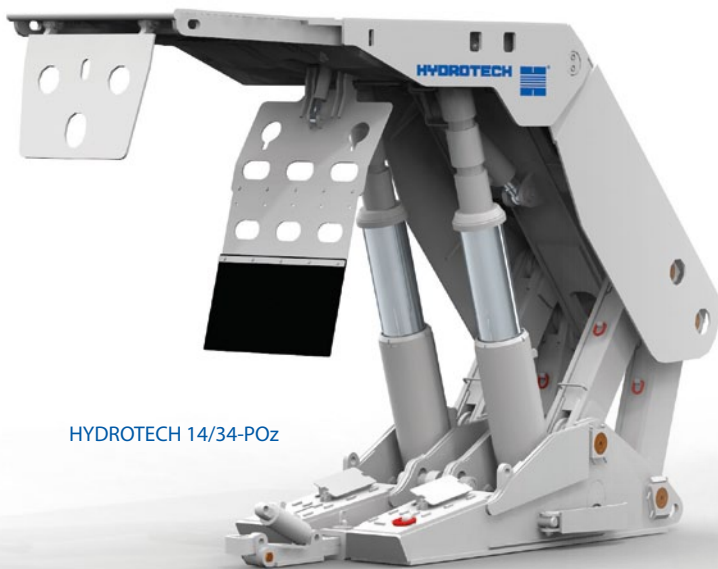


free copy



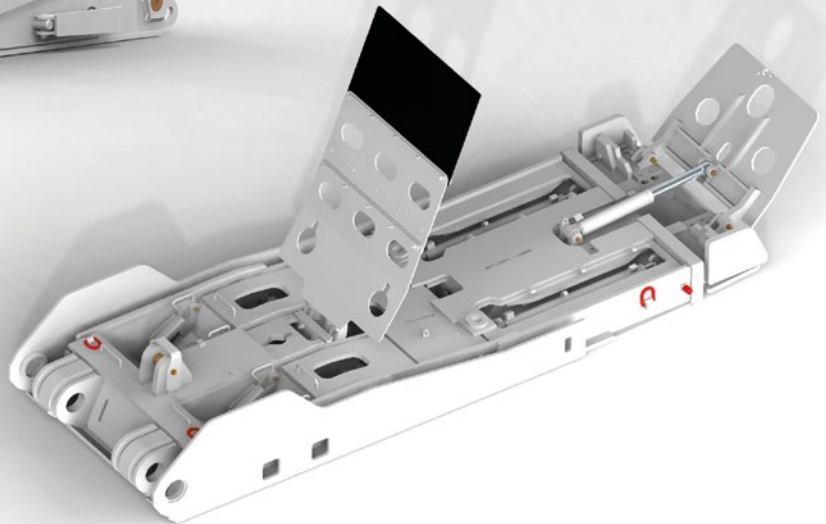
POWERED ROOF SUPPORTS

- for all kinds of longwall systems:
 - shearer/plough
 - roof collapse/filling goaf side
- custom designed to meet exacting cycles and operational requirements
- offer range:
 - design & manufacture
 - rebuilt & modification
 - refurbishment & reclaim

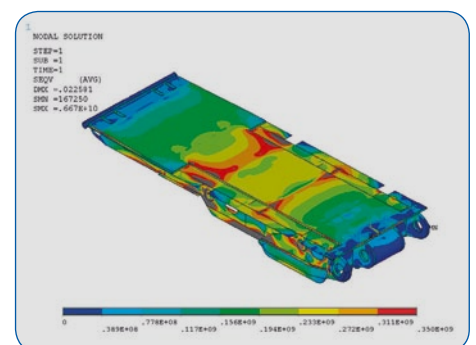
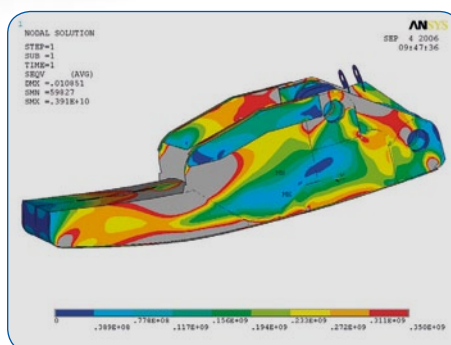
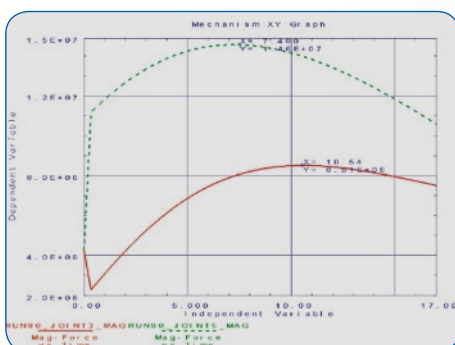


HYDROTECH 14/34-POz

- economically effective construction calculated and designed with Finite Element Analysis
- shields tested in notified labs for static and dynamic loads, fatigue tests up to 60.000 cycles – due to the highest requirements of EU standards, obtaining CE certificate
- special high strength steel materials used for shield structures – types up to S 690, S 960



- compact roof canopy, optionally with hydraulically extended feed and additional face shields
- floor bases sectional designed or "catamaran" type



INLINE AND FACE-END SHIELDS



HYDROTECH 24/54-POz

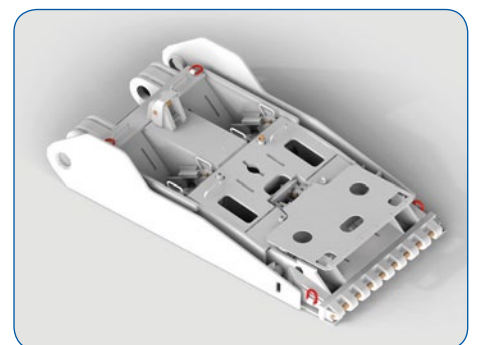
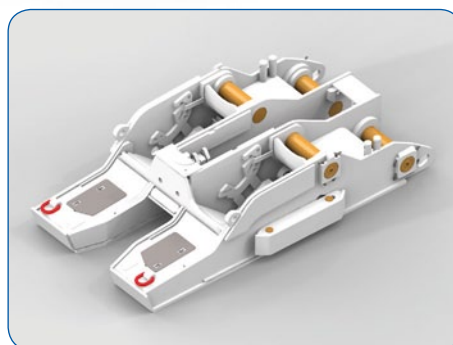
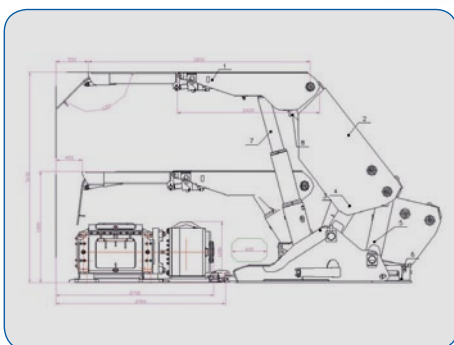
- shield height ranges: 1,0–5,0 m
- yield capacity: standard 0,9–1,2 MPa, up to 1,4 MPa
- stroke of advance: standard 0,6–0,8 m
- width: 1,5–1,75 m



- hydraulic or electronics control systems – manual or pilot-operated
- rock-burst valves (optional)
- wireless yield pressure monitoring system (optional)

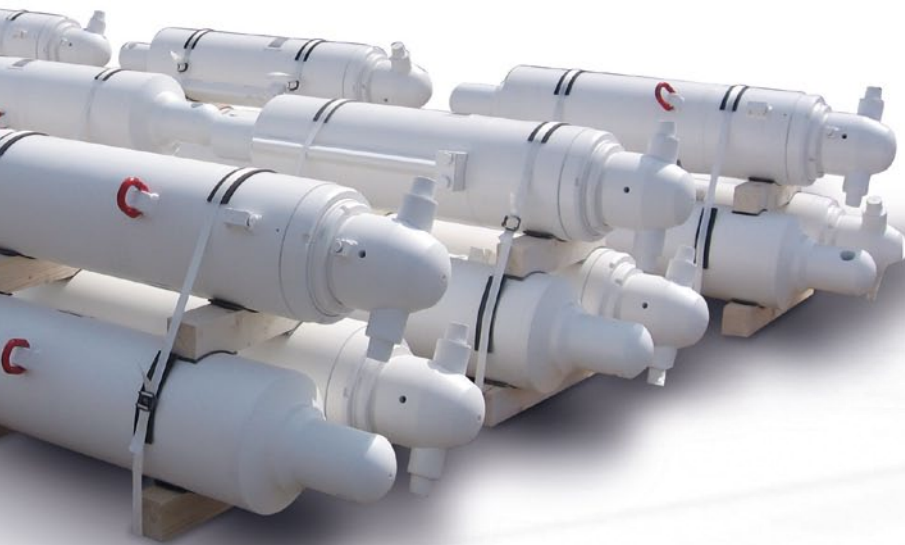


HYDROTECH 11/25-POz



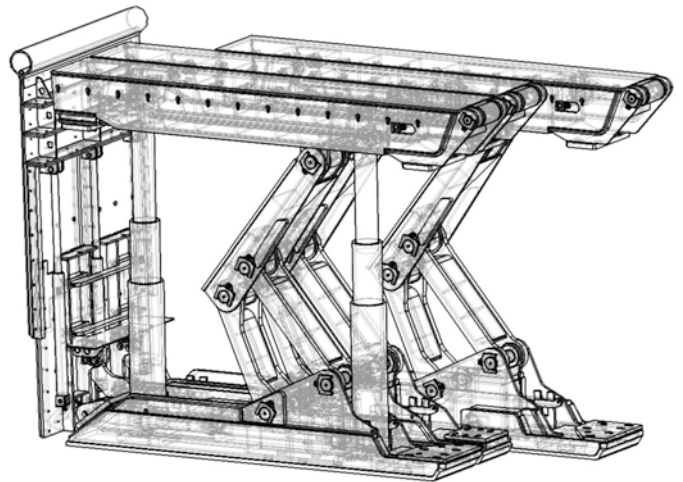
SPECIAL PURPOSE SHIELDS

- single-leg roof support for room & pillar systems, height ranges: 1,6–5,2 m



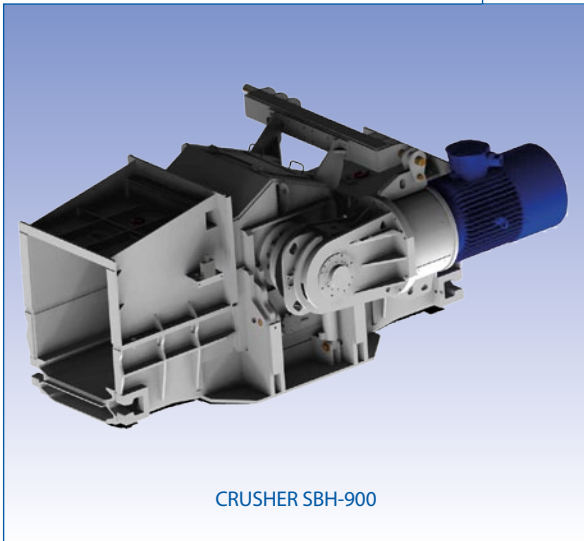
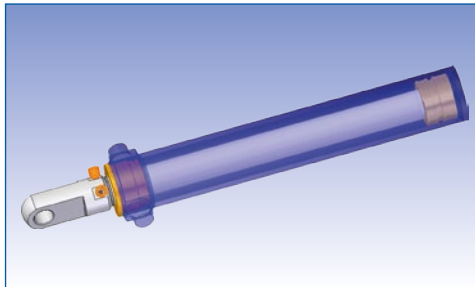
HYDROTECH 14/53-P-M (I, II, III, IV)

- hydraulic legs characteristics:
 - double telescopic or single action with extender
 - bore dia up to 450 mm
 - durable innovative coatings,
 - rock-burst valve protection if required
- special purpose face-end and gate shields

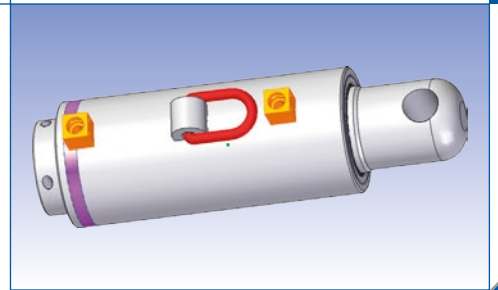


OTHER PRODUCTS FOR MINING

- hydraulic legs, props, rams and other cylinders of heavy duty applications:
 - high strength and quality materials used
 - bore diameter Ø50–450 mm
 - single acting and/or telescopic
 - durable coatings
 - working medium: oil and all kinds of hydraulic fluids



CRUSHER SBH-900



- crusher-breaker for excavated coal and stone material capacity up to 1.800 t/h



- machinery & systems for underground roadways driving and tunneling (partnership and cooperation with dh Mining Systems GmbH):
 - side dump loaders and drill jumbos
 - roadheaders
 - working platforms
 - excavators, dinterloaders
 - self-advance integrated conveyor & breaker systems





HYDROTECH

HYDROTECH S.A.

Poligonowa Street 21

44-251 Rybnik

POLAND

phone: +48 32 422 01 57; +48 32 433 11 76

fax: +48 32 433 11 33

www.hydrotech.com.pl

hydrotech@hydrotech.com.pl



• RYBNIK



UNIA EUROPEJSKA
EUROPEJSKI
FUNDUSZ SPOŁECZNY

